

Customer :

customer

Customer part :

customer part

Comment :

Comment

S1=2.25

S2=3.23

Tmax=463

Tp S2=502.0

PI=0.41

HI=106

Sample =1674.10

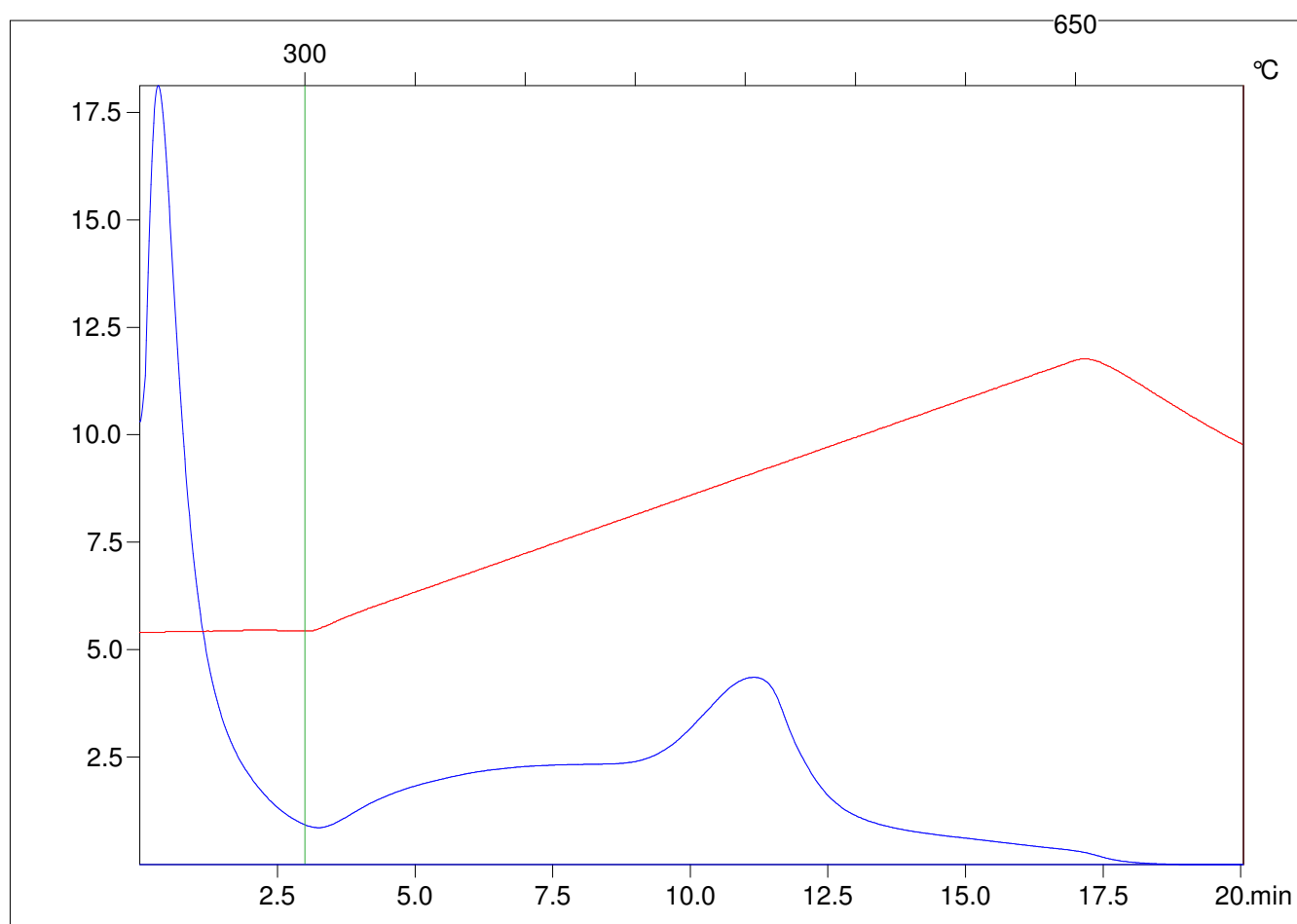
Method =Bulk Rock

Cycle=Basic

KFID(10*9)=1444

Qty =70.1

TOC=3.04



C:\VINC\PK1_1792\PK021.R00 : FID pyrolysis graphic

State

Pyro Status

Oxi Status